

## Human Claudin 18.2 VLP

Cat. No. CLD-HE1822



### Description

Source	Human Claudin 18.2 VLP is expressed from HEK293.
	It contains Met1-Val261 (It may have cross reaction with anti-His antibody).
Accession	P56856-2
Molecular Weight	The target protein has a predicted MW of 29 kDa.
Endotoxin	Less than 1 EU per µg by the LAL method.
Purity	> 95% as determined by HPLC

### Formulation and Storage

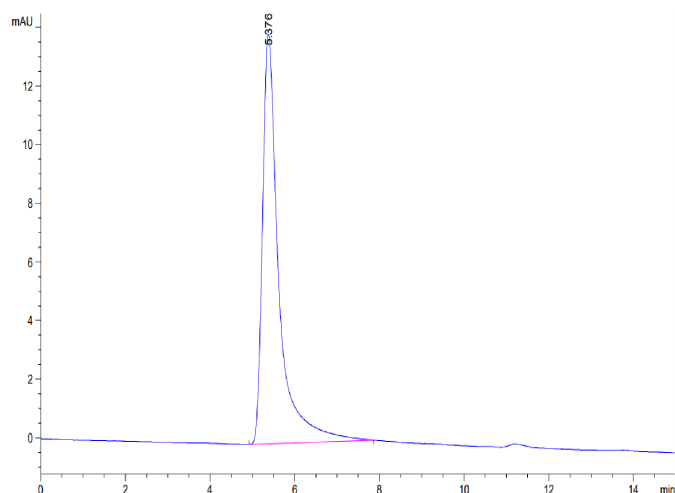
Formulation	Supplied as 0.22 µm filtered solution in PBS, 300 mM L-Arginine (pH 7.4). Notice: If you need it for immunization, water-soluble adjuvant is recommended.
Storage	Valid for 12 months from date of receipt when stored at -80°C. Recommend to aliquot the protein into smaller quantities for optimal storage. Please minimize freeze-thaw cycles.

### Background

Claudin18 (CLDN18) belongs to the large claudin family of proteins, which form tight junction strands in epithelial cells. CLDN18 is specifically expressed in the stomach and lung. CLDN18 has two alternatively spliced variants, CLDN18.1 and CLDN18.2. Isoform 2 (Claudin 18.2) is abundant in gastric tumors.

### Assay Data

#### SEC-HPLC

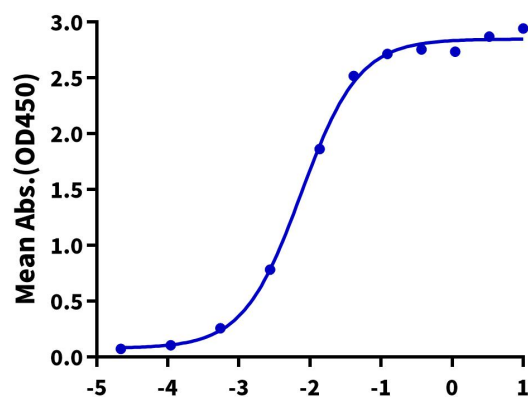


The purity of Human Claudin 18.2 VLP is greater than 95% as determined by SEC-HPLC.

#### ELISA Data

##### Human Claudin18.2 VLP ELISA

0.5µg Human Claudin 18.2 VLP Per Well



Immobilized Human Claudin 18.2 VLP at 5 µg/ml (100 µl/Well). Dose response curve for Anti-Claudin 18.2 Antibody, hFc Tag with the EC<sub>50</sub> of 7.5 ng/ml determined by ELISA (QC Test).

Log Anti-Claudin18.2 Antibody, hFc Tag Conc.(µg/ml)

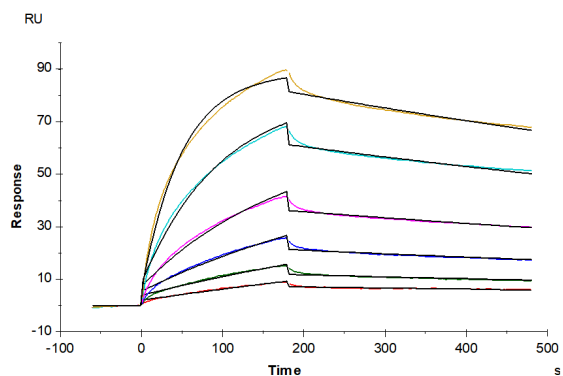
## Human Claudin 18.2 VLP

Cat. No. CLD-HE1822



### Assay Data

#### SPR Data



Human Claudin18.2 VLP captured on CM5 Chip via Anti-Claudin18.2 Antibody can bind Anti-Claudin18.2 Antibody with an affinity constant of 1.71 nM as determined in SPR assay (Biacore T200).